

# Custom made meetings at Camden Lock



**Holiday Inn**

AN IHG<sup>®</sup> HOTEL

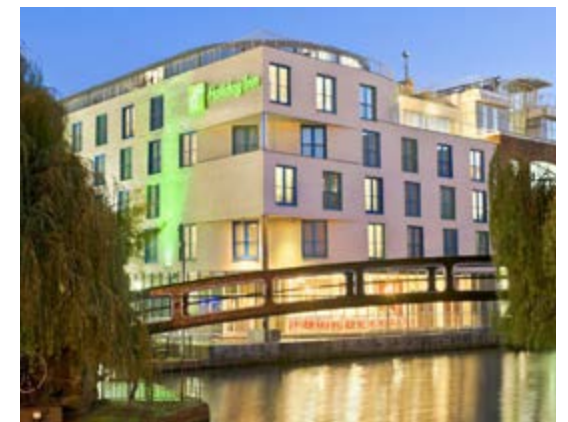
LONDON – CAMDEN LOCK

*Welcome to*  
**Holiday Inn London  
Camden Lock...**

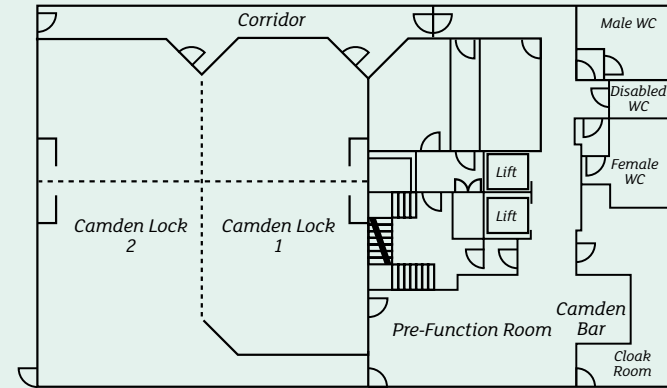
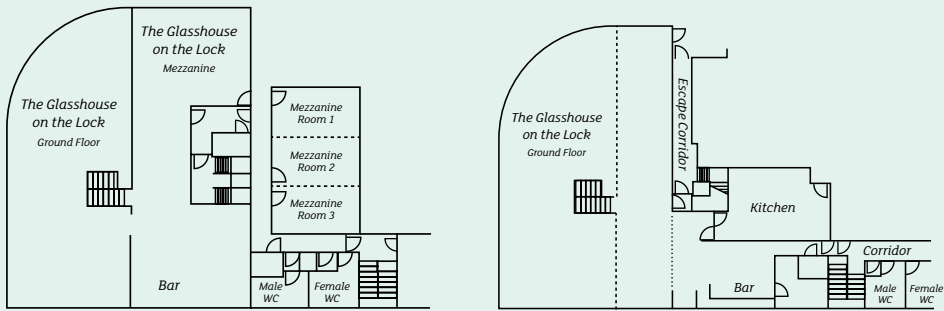


Nestled in the heart of Camden Town and with a stunning waterside location, we offer contemporary meeting and event facilities to meet all your needs.

Overlooking the Regent's Canal, our modern and stylish venue has the flexibility to cater for all your requirements. From corporate events to team building activities or product launches to conferences, the Holiday Inn London – Camden Lock has the function room to suit you.



# Floorplans and capacities



## Meeting Room Detail

Meeting Room	Reception	Theatre	Classroom	U-Shape	Board Room
Camden Lock 1	80	90	24	35	30
Camden Lock 2	80	100	24	45	35
Camden Lock Suite (combined)	140	180	60	36	35
Mezzanine 1/2/3	N/A	10	4	N/A	6
Mezzanine Suite	40	40	18	24	24
The Glasshouse	200	140	29	24	35
The Glasshouse (Waterfront level only)	200	100	29	24	35

Banquet	Dinner Dance	Cabaret	Height (m)	Room Dimensions L x W (m)
70	50	45	2.5	13.1 x 6.9
70	50	50	2.5	14.5 x 6.9
140	110	85	2.5	14.5 x 13.6
N/A	N/A	N/A	2.2	5.4 x 3.4
N/A	N/A	N/A	2.2	16.2 x 3.4
150	140	55	3.6	13.5 x 6.3
80	70	37	3.6	13.5 x 6.3



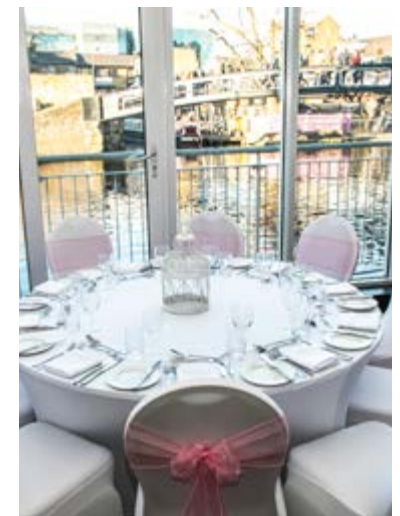
# ***We have everything ready for all events***

With the spectacular backdrop of Regents Canal, the Glasshouse will ensure that your private dining experience, be it for work or pleasure, is as incredible as it is memorable.



Our chefs will be ready to delight you with an array of locally sourced produce and will be happy to create bespoke menus to complement your event. We also have a fully equipped private kitchen which is perfect for any specialised outside catering.

We can host networking events, corporate lunches, celebratory dinners, Bar Mitzvahs, corporate summer parties, Christmas parties, cocktail events and weddings, our team will be with you every step of the way to make sure your event goes off with a bang!





# Meeting your Needs

## The Glasshouse

The Glasshouse on the Lock Suite is a unique and flexible space split over 3 floors, boasting floor to ceiling windows overlooking the Regent's Canal. It provides an exceptional location, perfect for those needing a stunning all-in-one space. Accessible from its own separate entrance, the space includes its own cloakroom, bar and kitchen. The Glasshouse is ideal for private events, exhibitions, product launches, team building activities and after meeting drinks.



## The Camden Suite

The Camden Suites are situated on their own dedicated floor with a private foyer area perfect for registration and refreshment breaks. The Camden Suites can accommodate up to 180 delegates or they can be split into 2 suites for smaller groups. This space is ideal for market research, examinations, AGMs, meetings and theatre presentations.

## The Mezzanine Suites

The Mezzanine Suites are your perfect boardrooms from 8 to 24 delegates and serve extremely well for syndicate rooms too. The suites have the flexibility to be sectioned individually to meet your requirements. These soundproof rooms are ideal for smaller meetings, interviews, brainstorming meetings and intimate private dinners.

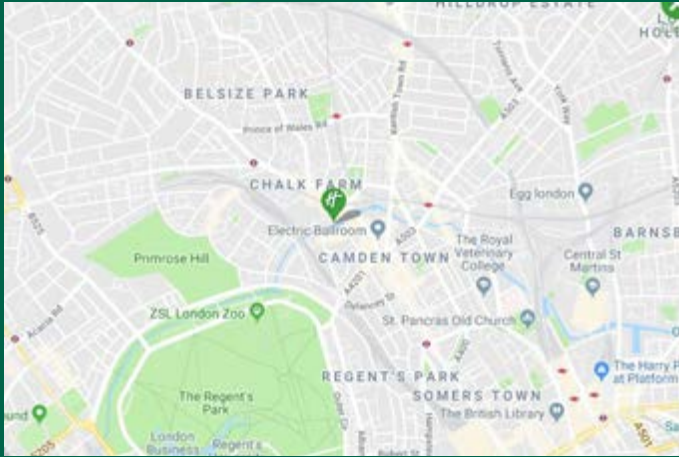




# ***Thinking of Staying Overnight?***

- 130 smart rooms with working space
- 12 Penthouse & Executive Suites
- 4 accessible rooms
- Complimentary WiFi throughout
- Safes in every room
- 24hour room service
- 24hour mini gym
- Continental & cooked breakfast available
- Located in the centre of Camden





## **Holiday Inn London – Camden Lock**

30 Jamestown Road, London - NW1 7BY

020 7485 4343 - Option 3

[events@hcamdenlock.co.uk](mailto:events@hcamdenlock.co.uk)

[www.holidayinncamden.co.uk](http://www.holidayinncamden.co.uk)



**Holiday Inn**

AN IHG<sup>®</sup> HOTEL

LONDON – CAMDEN LOCK